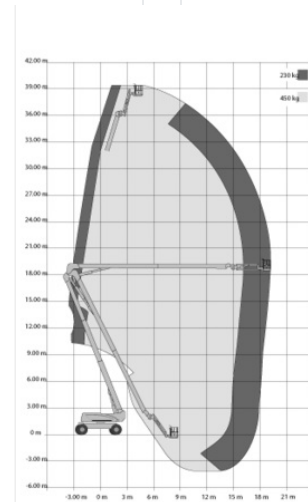
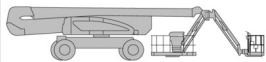


Articulated Boom Lift MT 401DA

Telescope Work Platforms

Product features

- Without outriggers
- With rotatable basket
- All wheel steering
- laterally movable basket arm
- Diesel all wheel drive



Technical data

| | |
|-----------------------------|---------------|
| Max. Working Height | 40.1 m |
| Max. Platform Height | 38.1 m |
| Slewing | endlos |
| Platform length | 2.44 m |
| Platform width | 0.92 m |
| Capacity | 450 kg |
| Platform rotation | 2x90° |
| Transport length | 11.46 m |
| Transport width | 2.51 m |
| Height | 3.05 m |
| Gross weight | 19,926 kg |
| Drive | Diesel-Allrad |
| Inclination across | 5 ° |
| Inclination along | 5 ° |

SALZBURG Bayernstraße 47, 5071 Wals | Phone 0043 / 662 / 85 45 74 | salzburg@maltech.com

VIENNA Laxenburgerstraße 246B, 1230 Wien | Phone 0043 / 1 / 616 22 44 | wien@maltech.com

GRAZ Industriezeile 1, 8401 Kalsdorf | Phone 0043 / 3135 / 53 202 | graz@maltech.com

HALL IN TYROL Schlöglstraße 24, 6060 Hall in Tirol | Phone 0043 / 5223 / 52 022 | hall@maltech.com

LINZ Gewerbepark 11, 4052 Ansfelden | Phone 0043 / 7229 / 79 655 | linz@maltech.com

ST. PÖLTEN Hugo von Hofmannsthalstraße 4, 3100 St. Pölten | Phone 0043 / 1 / 616 22 44 | stpoelten@maltech.com

GYÖR | DEBRECEN | BUDAPEST | BRATISLAVA | KOSICE