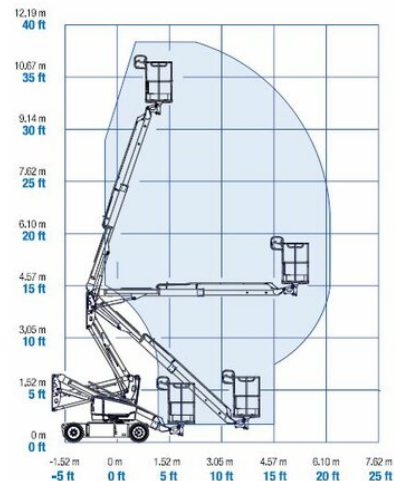


Articulated Boom Lift MT 121N

Telescope Work Platforms

Product features

- Battery drive
- Without outriggers
- non marking tyres



Technical data

| | |
|-----------------------------|----------|
| Max. Working Height | 12 m |
| Max. Platform Height | 10 m |
| Slewing | 400° |
| Platform length | 1.17 m |
| Platform width | 0.76 m |
| Capacity | 200 kg |
| Platform rotation | nein |
| Transport length | 4.17 m |
| Transport width | 1.5 m |
| Gross weight | 3,665 kg |
| Drive | Batterie |
| Inclination across | 2.5 ° |
| Inclination along | 4.5 ° |

SALZBURG Bayernstraße 47, 5071 Wals | Phone 0043 / 662 / 85 45 74 | salzburg@maltech.com

VIENNA Laxenburgerstraße 246B, 1230 Wien | Phone 0043 / 1 / 616 22 44 | wien@maltech.com

GRAZ Industriezeile 1, 8401 Kalsdorf | Phone 0043 / 3135 / 53 202 | graz@maltech.com

HALL IN TYROL Schlöglstraße 24, 6060 Hall in Tirol | Phone 0043 / 5223 / 52 022 | hall@maltech.com

LINZ Gewerbepark 11, 4052 Ansfelden | Phone 0043 / 7229 / 79 655 | linz@maltech.com

ST. PÖLTEN Hugo von Hofmannsthalstraße 4, 3100 St. Pölten | Phone 0043 / 1 / 616 22 44 | stpoelten@maltech.com

GYŐR | DEBRECEN | BUDAPEST | BRATISLAVA | KOSICE