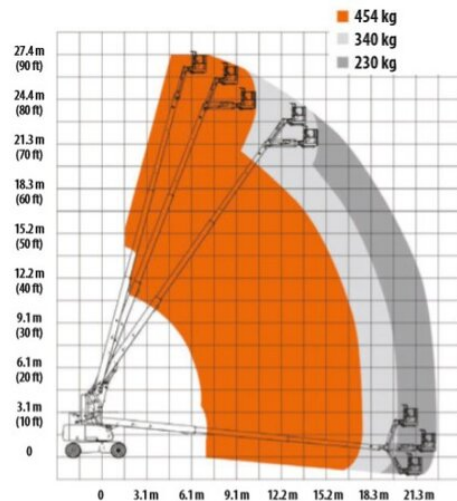


Articulated Boom Lift MT 282DA+

Telescope Work Platforms

Product features

- Without outriggers
- With rotatable basket
- All wheel drive
- Basket jib
- Diesel all wheel drive



Technical data

Max. Working Height	28.2 m
Max. Platform Height	26.2 m
Slewing	360°
Platform length	0.91 m
Platform width	2.45 m
Capacity	450 kg
Platform rotation	2 x 90°
Transport length	12.2 m
Transport width	2.48 m
Height	3.05 m
Gross weight	17,300 kg
Drive	Diesel-Allrad, 4x HD- Motoren
Inclination across	4 °
Inclination along	4 °

SALZBURG Bayernstraße 47, 5071 Wals | Phone 0043 / 662 / 85 45 74 | salzburg@maltech.com

VIENNA Laxenburgerstraße 246B, 1230 Wien | Phone 0043 / 1 / 616 22 44 | wien@maltech.com

GRAZ Industriezeile 1, 8401 Kalsdorf | Phone 0043 / 3135 / 53 202 | graz@maltech.com

HALL IN TYROL Schlöglstraße 24, 6060 Hall in Tirol | Phone 0043 / 5223 / 52 022 | hall@maltech.com

LINZ Gewerbepark 11, 4052 Ansfelden | Phone 0043 / 7229 / 79 655 | linz@maltech.com

ST. PÖLTEN Ernst Maerker Straße 20, 3100 St. Pölten | Phone 0043 / 2742 / 22206 | poelten@maltech.com

GYÖR | DEBRECEN | BUDAPEST | BRATISLAVA | KOSICE